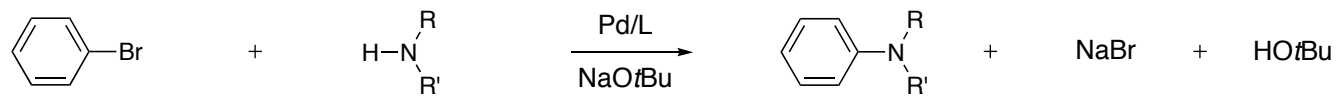
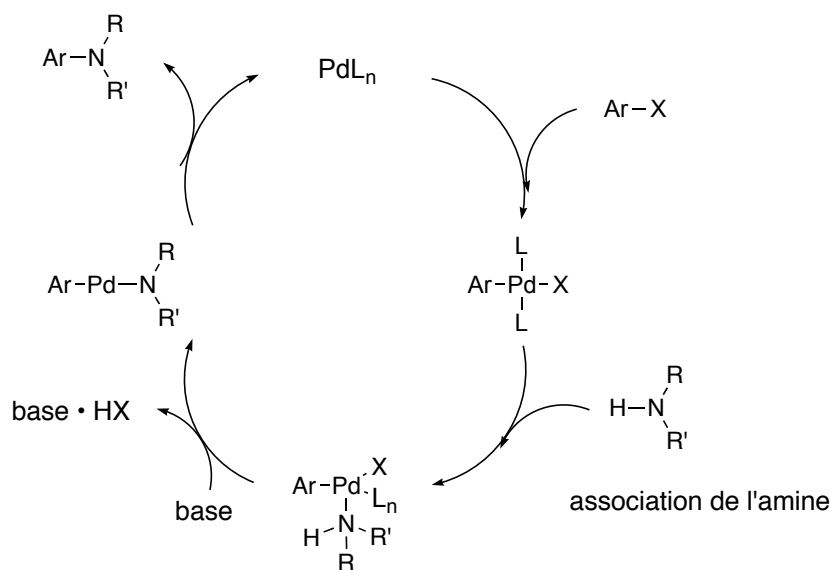


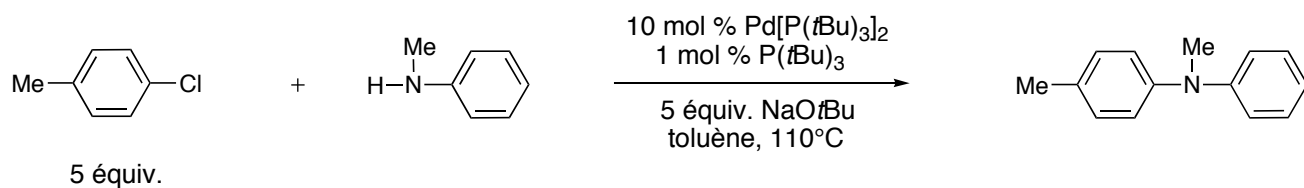
Aminations



{ Buchwald
Hartwig



• Exemple

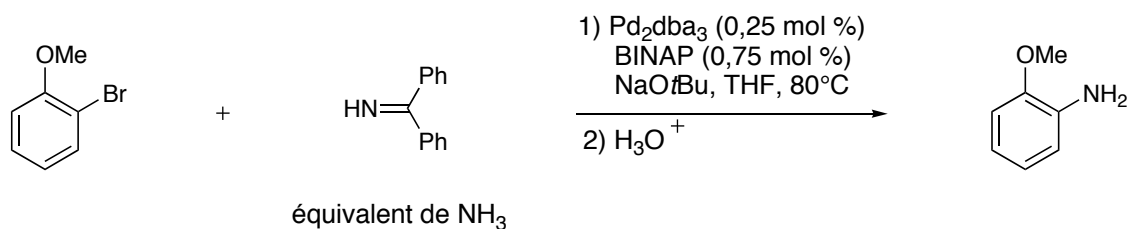


• Nature des ligands

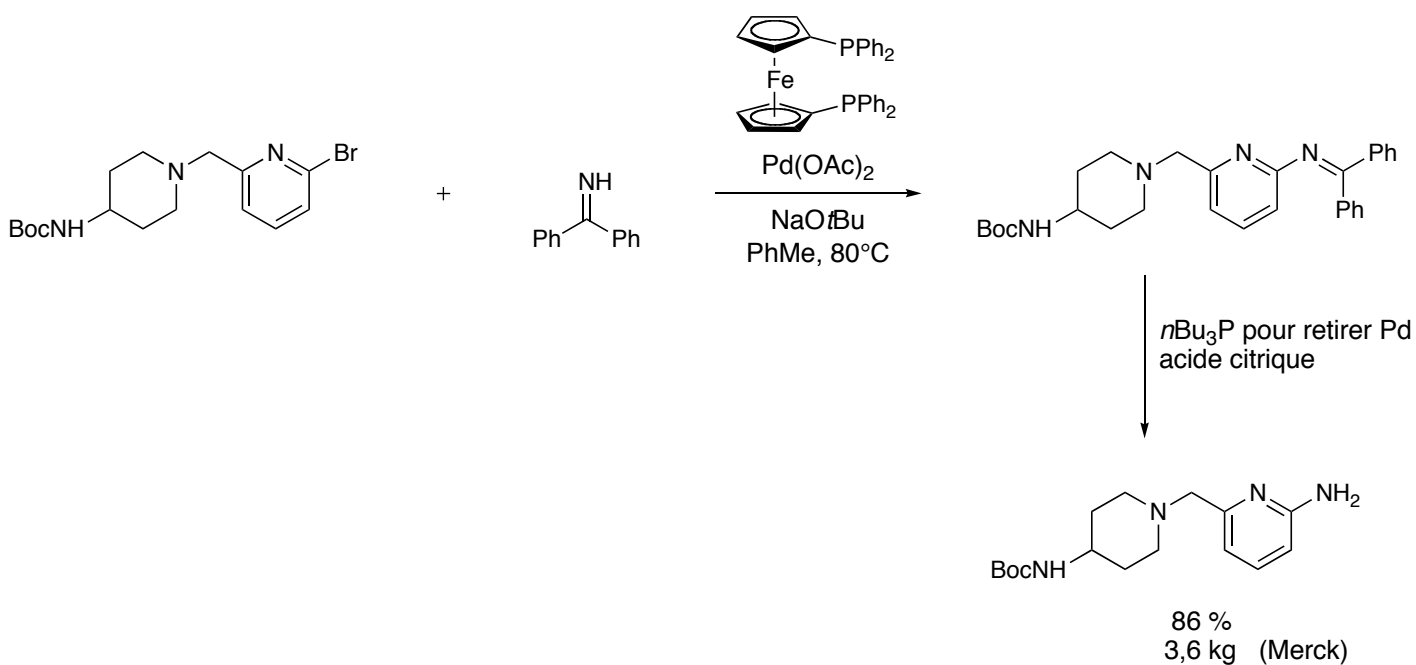
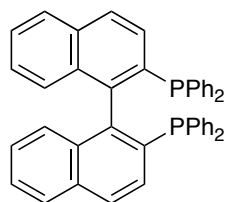
- Ligands riches en e⁻ augmentent la densité électronique autour du Pd
 → étape d'addition oxydante facilitée

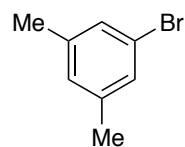
- Ligands encombrés $L_2Pd \rightleftharpoons LPd$
 (LPd)
 espèce catalytique impliquée dans le cycle

- Ligands encombrés favorisent l'élimination réductrice

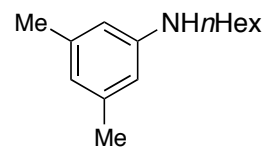
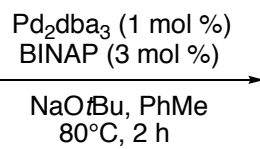


BINAP :



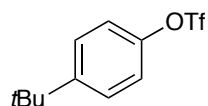


+

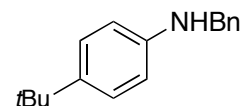
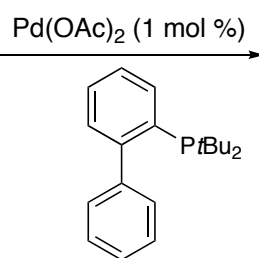


produit/double arylation : 39/1

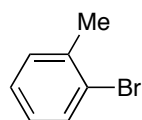
88 %



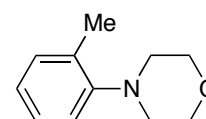
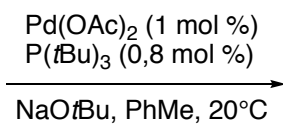
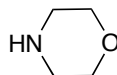
+



81 %



+



96 %

